

## Description

The E5 Series rotary encoder has a molded polycarbonate enclosure with either a 5-pin or 10-pin finger-latching connector. This optical incremental encoder is designed to easily mount to and dismount from an existing shaft to provide digital feedback information.

The E5 Series is easy to add to existing applications and only consists of five main components: base, cover, hub/code wheel, optical encoder module and internal differential line driver (differential version only).

The single-ended output version (**S**-option) is typically used with cables of 6 feet or less. For longer cable lengths, the differential output version (**D**-option) is recommended.

The base and cover are both constructed of a rugged 20% glass filled polycarbonate. Attachment of the base to a surface may be accomplished by utilizing one of several machine screw bolt circle options. Positioning of the base to the centerline of a shaft is ensured by use of a centering tool (sold separately). The cover is securely attached to the base with two 4-40 flat head screws to provide a resilient package protecting the internal components.

The internal components consist of a shatterproof mylar disk mounted to a precision machined aluminum hub and an encoder module. The module consists of a highly collimated solid state light source and monolithic phased array sensor, which together provide a system extremely tolerant to mechanical misalignments.

For differential versions: the internal differential line driver (26C31) can source and sink 20mA at TTL levels. The recommended receiver is industry standard 26C32. Maximum noise immunity is achieved when the differential receiver is terminated with a 110-ohm resistor in series with a .0047 microfarad capacitor placed across each differential pair. The capacitor simply conserves power; otherwise power consumption would increase by approximately 20mA per pair, or 60mA for 3 pairs.

A secure connection to the E5 Series encoder is made through a 5-pin (single-ended versions) or 10-pin (differential versions) finger-latching connector (sold separately). The mating connectors are available from US Digital with several cable options and lengths.



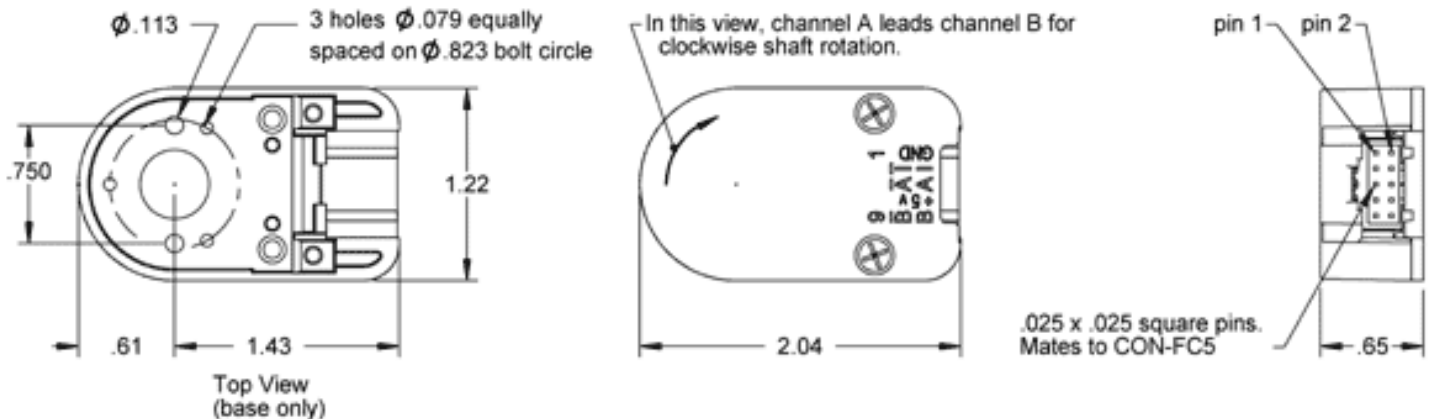
## Features

- ▶ Quick, simple assembly and disassembly
- ▶ Rugged screw-together housing
- ▶ Positive finger-latching connector
- ▶ Accepts .010" axial shaft play
- ▶ 32 to 1250 cycles per revolution (CPR)
- ▶ 128 to 5000 pulses per revolution (PPR)
- ▶ 2 channel quadrature TTL squarewave outputs
- ▶ Optional index (3rd channel)
- ▶ -40 to +100C operating temperature
- ▶ Mounting compatibility with Agilent HEDS-5500

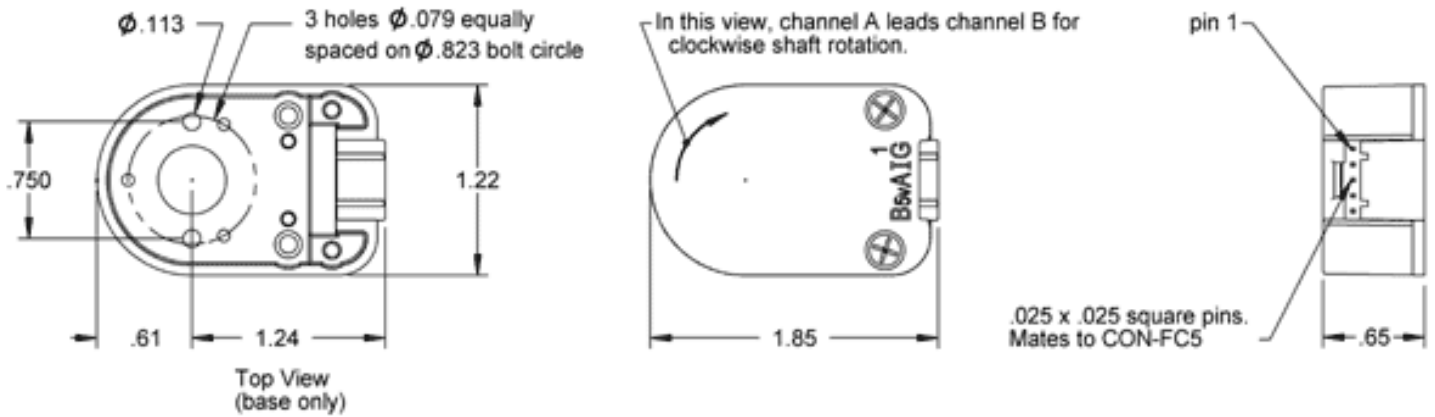
## Related Products & Accessories

- CA-FC10-SH-FC10 10-Pin Latching / Latching Shielded Cable (Base price \$26.20)
- CA-FC10-SH-NC 10-Pin Latching / Unterminated Shielded Cable (Base price \$13.60)
- CA-FC10-W8-NC 10-Pin Latching / Unterminated 8-Wire Discrete Cable (Base price \$13.10)
- CA-FC10L-SH-FC10L 10-Pin Latching / Latching Shielded Cable (Agilent Pin-Out) (Base price \$26.20)
- CA-FC10L-SH-NC 10-Pin Latching / Unterminated Shielded Cable (Agilent Pin-Out) (Base price \$13.60)
- CA-FC5-SH-FC5 5-Pin Latching / Latching Shielded Cable (Base price \$16.76)
- CA-FC5-SH-NC 5-Pin Latching / Unterminated Shielded Cable (Base price \$8.88)
- CA-FC5-SS-MD6 5-Pin Latching / 6-Pin Modular Silver Satin Cable (Base price \$13.11)
- CA-FC5-W4-NC 5-pin Latching / Unterminated 4-Wire Discrete Cable (Base price \$8.38)
- CA-FC5-W5-NC 5-Pin Latching / Unterminated 5-Wire Discrete Cable (Base price \$8.38)
- CON-FC10 10-Pin Finger Latching Connector (Base price \$8.40)
- CON-FC5 5-Pin Finger Latching Connector (Base price \$3.15)
- CTOOL Centering Tool for E2, E3, E5, E6, and E7P (Base price \$5.25)
- HEXD-050 Hex Driver - .050" (Base price \$5.25)
- HEXW Hex Wrench (Base price \$0.53)
- SCREW Threaded Fasteners (Base price \$0.26)
- SPACER Spacer Tool (Base price \$0.95)

## Differential



## Single-Ended



## Mechanical

| Parameter   | Dimension              | Units                |
|---|------------------------|----------------------|
| Moment of Inertia   | 8.0 x 10 <sup>-6</sup> | oz-in-s <sup>2</sup> |
| Hub Set Screw   | 3-48 or 4-48           | in.                  |
| Hex Wrench Size   | .050                   | in.                  |
| Encoder Base Plate Thickness                              | .135                   | in.                  |
| 3 Mounting Screw Size                                     | 0-80                   | in.                  |
| 2 Mounting Screw Size                                     | 2-56 or 4-40           | in.                  |
| 3 Screw Bolt Circle Diameter                              | .823 ±.005             | in.                  |
| 2 Screw Bolt Circle Diameter                              | .750 ±.005             | in.                  |
| Required Shaft Length                                     | .445 to .570*          | in.                  |
| With <b>E</b> -option                                     | .445 to .750*          | in.                  |
| With <b>H</b> -option                                     | >=.445*                | in.                  |
| Single-ended ( <b>S</b> -option) Weight                   | 0.82                   | oz.                  |
| Differential ( <b>D</b> -option, <b>L</b> -option) Weight | 0.91                   | oz.                  |

\* Add .125" to the required shaft length when using **R**-option.

## Absolute Maximum Ratings

| Parameter                           | Max.    | Units                |
|-------------------------------------|---------|----------------------|
| Vibration (5 to 2kHz)               | 20      | g                    |
| Shaft Axial Play                    | ±0.010  | in.                  |
| Shaft Eccentricity Plus Radial Play | 0.004   | in.                  |
| Acceleration                        | 250,000 | rad/sec <sup>2</sup> |

| Parameter   | Max.   | Units |
|---|--|-------|
| Maximum RPM<br>e.x. CPR = 1250, max. rpm = 4800<br>e.x. CPR = 512, max. rpm = 11718<br>e.x. CPR = 50, max. rpm = 60000<br>e.e. CPR = 32, max. rpm = 60000 | minimum value of (6000000 / CPR) and (60000) | rpm   |

- Note that radial play translates directly to position inaccuracy.
- Note: 60000 rpm is the maximum rpm due to mechanical considerations. The maximum rpm due to the module's 100kHz maximum count frequency is (6000000/CPR).

## Phase Relationship

A leads B for clockwise shaft rotation, and B leads A for counterclockwise rotation viewed from the cover/label side of the encoder (see the EM1 / HEDS page).

## Single-ended Electrical

- Specifications apply over entire operating temperature range.
- Typical values are specified at Vcc = 5.0Vdc and 25 ° C.
- For complete details see the EM1 and HEDS product pages.

| Resolution   | Supply Current<br>Typ / Max | Output voltage<br>low | Output voltage<br>high | Based on      |
|--|-----------------------------|-----------------------|------------------------|---------------|
|  |                             | Max                   | Min                    |               |
| 50,96, 100, 110, 120, 192, 200, 250, 256, 360, 400, 500, 512, 540 CPR, non-index | 17 / 40 mA                  | 0.4 volts @ 3.2mA     | 2.4 volts @ -200uA     | Low-res HEDS  |
| 1000, 1016, 1024 CPR, non-index  | 57 / 85 mA                  | 0.5 volts @ 8mA       | 2.4 volts @ -40uA      | High-res HEDS |
| 32 CPR, with index   | 27 / 30 mA                  | 0.5 volts @ 8mA       | 2.0 volts @ -8mA       | EM1           |
| 50,96, 100, 192, 200, 250, 256, 360, 400, 500, 512 CPR, with index               | 57 / 85 mA                  | 0.5 volts @ 8mA       | 2.4 volts @ -40uA      | High-res HEDS |
| 720, 900, 1000, 1024, 1250 CPR, with index                                       | 55 / 57 mA                  | 0.5 volts @ 8mA       | 2.0 volts @ -8mA       | EM1           |

## Differential Electrical

| Specification       | Min. | Typ. | Max. | Units | Notes   |
|---------------------|------|------|------|-------|---------|
| Supply              | 4.5  | 5.0  | 5.5  | Volts |         |
| Current Consumption |      |      |      |       |         |
| Index: 32 CPR       |      | 28   | 53   | mA    | No load |

| Specification                  | Min. | Typ. | Max. | Units | Notes    |
|--------------------------------|------|------|------|-------|----------|
| Index: 720, 720, 900, 1250 CPR |      | 56   | 59   | mA    | No load  |
| Index: All Other Resolutions   |      | 58   | 88   | mA    | No load  |
| Non-index: <2000 CPR           |      | 18   | 43   | mA    | No load  |
| Non-index: >=2000              |      | 58   | 88   | mA    | No load  |
| <b>Output Voltage</b>          |      |      |      |       |          |
| Sourcing to +5                 | 2.4  | 3.5  |      | Volts | @ - 20mA |
| Sinking to Ground              |      | 0.2  | 0.4  | Volts | @ 20mA   |

## Torque

| Parameter                                   | Torque       |
|---|--------------|
| Hub Set Screw to Shaft                      | 2-3 in.-lbs. |
| Cover (4-40 screws through cover into base) | 2-3 in.-lbs. |
| Base to Mounting Surface                    | 4-6 in.-lbs. |
| Base to Mounting Adapter Plate              | 4-6 in.-lbs. |
| Adapter Plate to Mounting Surface           | 4-6 in.-lbs. |

## Disk Optics

Be sure to keep different diameters, resolutions and options separated. The resolution of the optoelectronic modules and the code wheels must match. Index and non-index parts cannot be mixed since the optical patterns are different. An identifier is stamped on each optoelectronic module.

### For Agilent Modules (HEDS):

The 2-channel (non-index) version can be identified by a 9100 or 9200. The 3-channel (index) version can be identified by a 9140. One letter specifies the resolution as shown in the table below.

### For US Digital Modules (EM1):

Only available in 3-channel (index) version and are identified by a 1 for 1" disk. The second number identifies the resolution as shown in the table below (*in italics*).

| Disk | Standard | Index       |
|------|----------|-------------|
| 32   | -        | <i>1-32</i> |
| 50   | S        | S           |
| 96   | C        | C           |
| 100  | C        | C           |
| 110  | C        | -           |

| Disk | Standard | Index  |
|------|----------|--------|
| 120  | C        | -      |
| 192  | E        | E      |
| 200  | E        | E      |
| 250  | F        | F      |
| 256  | F        | F      |
| 360  | G        | G      |
| 400  | H        | H      |
| 500  | A        | A      |
| 512  | I        | I      |
| 540  | I        | -      |
| 720  | -        | 1-720  |
| 900  | -        | 1-900  |
| 1000 | B        | 1-1000 |
| 1016 | J        | -      |
| 1024 | J        | 1-1024 |
| 1250 | -        | 1-1250 |

## Options

### Index

Provides a single pulse per revolution.

### 3-option

The 3-option makes all five of these hole diameters .125". The .438" diameter center hole can also mate with a motor boss.

#### View option:

- Single-ended Version



- Differential Version



**A-option**

The **A-option** adds a .497" diameter alignment shoulder designed to slip into a .500" diameter recess in the mounting surface centered around the shaft.

**View option:**

- Single-ended Version



- Differential Version



**E-option**

The **E-option** provides a cylindrical extension to the cover allowing for longer shafts of up to .750".

**View option:**

- Single-ended Version



- Differential Version



**G-option**

This option includes molded ears on the **E5** base which enable it to be mounted to a 1.812" diameter bolt circle. The mounting holes are designed to fit 4-40 screws. Because the ears are molded to the **E5** base this does not increase the thickness of the encoder and does not add to the required shaft length. This option will work with shaft lengths of .445" to .570".

**View option:**

- Single-ended Version



- Differential Version





**T-option**

When mounting holes are not available, a pre-applied transfer adhesive (with peel-off backing) is available for stick-on mounting. Use the centering tool (sold separately) to slide the base into position. T-option specifies transfer adhesive on the standard mounting base.

**Please note:** Only available in polycarbonate versions (**E5D** and **E5S**).

- Single-ended Version



- Differential Version



 **Accessories**

**Centering Tools**

**Part #:** CTOOL - (Shaft Diameter)

**Description:** This reusable tool provides a simple method for accurately centering the **E5** base onto the shaft. It is recommended for the following situations:

- When using mounting screws smaller than 4-40.
- When the position of the mounting holes is in question.
- When using the 3-hole mounting pattern.
- When using the **T** - option transfer adhesive.

**Instructions:** When mounting encoder base, slide centering tool down shaft until it slips into centering hole of encoder base. Tighten mounting screws, then remove centering tool.

**Hex Tools**

**Part #:** HEXD-050 (only included with default or PKG1 - packaging options).

**Description:** Hex driver, .050" flat-to-flat for 3-48 or 4-48 set screws.

**Part #:** HEXW-050 (only included with PKG2 or PKG3 - packaging options).

**Description:** Hex wrench, .050" flat-to-flat for 3-48 or 4-48 set screws.

**Spacer Tools**

**Part #:** SPACER-4218

**Screws**

**Part #:** SCREW-080-250-PH

**Description:** Pan Head, Cross Drive 0-80 UNF x 1/4"

**Quantity Required for Mounting:** 3 per encoder

**Part #:** SCREW-256-250-PH

**Description:** Pan Head, Cross Drive 2-56 UNC x 1/4"

**Quantity Required for Mounting:** 2 per encoder

**Part #:** SCREW-440-250-PH

**Description:** Pan Head, Cross Drive 4-40 UNC x 1/4"

**Quantity Required for Mounting:** 2 per encoder

## Pin-outs

| 5-pin Single-Ended |             | 10-pin Differential Standard |             | 10-pin Differential (L-option*) |               |
|--------------------|-------------|------------------------------|-------------|---------------------------------|---------------|
| Pin                | Description | Pin                          | Description | Pin                             | Description   |
| 1                  | Ground      | 1                            | Ground      | 1                               | No Connection |
| 2                  | Index       | 2                            | Ground      | 2                               | +5VDC power   |
| 3                  | A channel   | 3                            | Index-      | 3                               | Ground        |
| 4                  | +5VDC power | 4                            | Index+      | 4                               | No connection |
| 5                  | B channel   | 5                            | A- channel  | 5                               | A- channel    |
|                    |             | 6                            | A+ channel  | 6                               | A+ channel    |
|                    |             | 7                            | +5VDC power | 7                               | B- channel    |
|                    |             | 8                            | +5VDC power | 8                               | B+ channel    |
|                    |             | 9                            | B- channel  | 9                               | Index-        |
|                    |             | 10                           | B+ channel  | 10                              | Index+        |

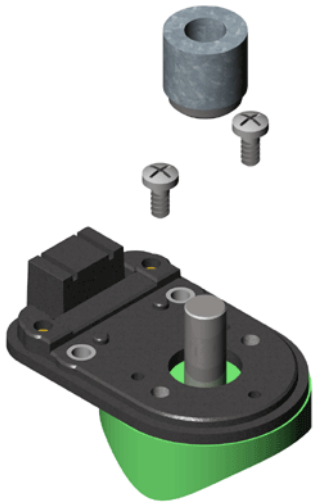
\* Avago / Agilent / HP compatible version.

## Assembly Instructions

View the PDF version of this document.

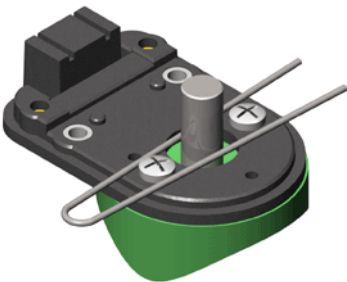
**Please note:**

- Shown using Polycarbonate Single-ended version.
- These instructions are compatible for all versions of the E5.



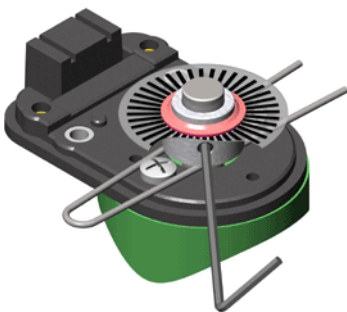
### 1. Base Mounting

Secure base to mounting surface using two or three screws. If a centering tool is used, slip it over shaft and into center hole of base. Tighten mounting screws. Remove centering tool.



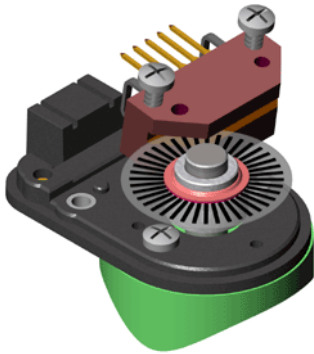
### 2. Spacer Installation

Place spacer tool around shaft as shown.



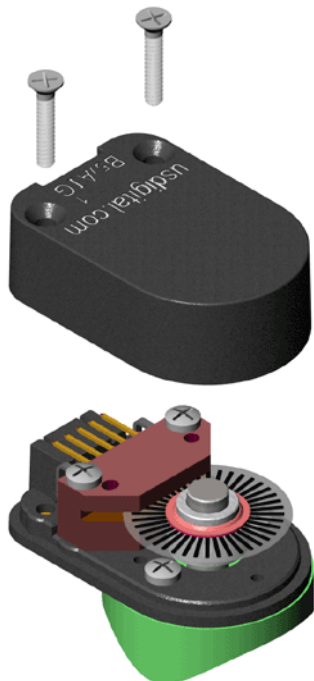
### 3. Codewheel Installation

Slip codewheel over shaft with mylar disk towards top until it bottoms out against spacer tool. Tighten set screw with hex wrench provided while pressing down on hub.



**4. Encoder Module Installation**

Slip optical module into position until the two alignment pins slip into holes of module (thick side of module towards bottom). Secure with 4-40 x 1/2" screws (supplied).



**5. Cover Installation**

Place housing (cover) over assembly and secure with two 4-40 x 5/8" cover screws (supplied).

### Ordering Information

| E5 | CPR  | Bore  | Index    | Output             | Cover      | Base           | Packaging   |
|----|------|-------|----------|--------------------|------------|----------------|---|
|    | 32   | 079 = | N =No    | S =Single-ended    | D =Default | D =Default     | B =Packaged in bulk. One spacer tool and one hex. |
|    | 50   | 2mm   | Index    | D =Differential    | E =Cover   | 3 =Base        | 1 =Packaged individually.                         |
|    | 96   | 118 = | I =Index | L =Avago/Agilent   | Extension  | Mounting       | One spacer tool and one                           |
|    | 100  | 3mm   | (3rd     | compatible pin-out | H =Hole in | Holes become   | hex driver per 100                                |
|    | 110  | 125 = | channel) |                    | Cover      | .125"          | encoders.   |
|    | 120  | 1/8"  |          |                    |            | A =Adds self-  | 2 =Packaged individually                          |
|    | 192  | 156 = |          |                    |            | aligning       | with one spacer tool and                          |
|    | 200  | 5/32" |          |                    |            | shoulder to    | one hex wrench per                                |
|    | 250  | 157 = |          |                    |            | base           | encoder.  |
|    | 256  | 4mm   |          |                    |            | G =Adds 1.812  | 3 =Packaged individually                          |
|    | 360  | 188 = |          |                    |            | mounting       | with one spacer tool, one                         |
|    | 400  | 3/16" |          |                    |            | "ears" to base | hex wrench, and one                               |
|    | 500  | 197 = |          |                    |            | R =Adds 3-slot | centering tool per encoder.                       |
|    | 512  | 5mm   |          |                    |            | adapter to     |   |
|    | 540  | 236 = |          |                    |            | bottom of base |   |
|    | 720  | 6mm   |          |                    |            | T =Transfer    |   |
|    | 900  | 250 = |          |                    |            | Adhesive       |   |
|    | 1000 | 1/4"  |          |                    |            |                |   |
|    | 1016 | 276 = |          |                    |            |                |   |
|    | 1024 | 7mm   |          |                    |            |                |   |
|    | 1250 | 313 = |          |                    |            |                |   |
|    |      | 5/16" |          |                    |            |                |   |
|    |      | 315 = |          |                    |            |                |   |
|    |      | 8mm   |          |                    |            |                |   |
|    |      | 375 = |          |                    |            |                |   |
|    |      | 3/8"  |          |                    |            |                |   |
|    |      | 394 = |          |                    |            |                |   |
|    |      | 10mm  |          |                    |            |                |   |

### Rules

- ▶ Index must be something other than I when CPR is 110, 120 or 540
- ▶ Index must be equal to I when CPR is 32, 720, 900 or 1250
- ▶ Cover must be something other than E when Bore is 394

### Notes

- ▶ Cables and connectors are not included and must be ordered separately.
- ▶ US Digital warrants its products against defects in materials and workmanship for two years. See complete warranty for details.

### Base Pricing

| Quantity | Price   |
|----------|---------|
| 1        | \$51.50 |
| 10       | \$43.09 |
| 50       | \$35.63 |
| 100      | \$30.97 |

- ▶ Add 29% per unit for **Output** of Differential or Avago/Agilent compatible pin-out
- ▶ Add \$7.00 per unit for **Base** of Adds 3-slot adapter to bottom of base
- ▶ Add \$6.00 per unit for **Base** of Transfer Adhesive
- ▶ Add \$3.00 per unit for **Packaging** of Packaged individually. One spacer tool and one hex driver per 100 encoders.
- ▶ Add \$4.00 per unit for **Packaging** of Packaged individually with one spacer tool and one hex wrench per encoder.
- ▶ Add \$7.00 per unit for **Packaging** of Packaged individually with one spacer tool, one hex wrench, and one centering tool per encoder.
- ▶ Add 21% per unit for **Index** of I or **CPR** greater than or equal to 1000.